



Professional Manufacturer

Air Filled Buoyancy Bags Proof Load Test Water Bags



Your safety is our mission!

Qingdao Doowin Rubber and Plastic Co.,Ltd

Address: Xiazhuang Industry Park, Qingdao, China

Tel/Fax: +86-532-87788178

Email: sales@doowin-dooflex.com

www.doowin-dooflex.com www.doowin.cc

DOOWIN Rubber & Plastic. All rights Reserved.



DooFlex
Flexible Engineering

Who we are

DooFlex is China leading manufacturer of flexible products made of PVC and TPU coating fabric .

DooFlex is China unique professional manufacturer of underwater air lifting bags, and buoyancy bags. Our lifting bags are used for the marine salvage, buoyancy support, pipeline laying work. All DooFlex air lift bags are fully compliant with IMCA-D-016.

DooFlex water filled weight bags are manufactured and tested comply with the requirements of LEEA 051. DooFlex equip the modern production machine, use the market-leading material, and advanced production technology to manufacture high quality products.

DooFlex's engineers and consultants have been in fabrication and use these products for more than 30 years, experienced in this industry. DooFlex has the clients in the diving, marine rescue and salvage, energy and oil, offshore and shipping and other industries all over the world.

DooFlex is the trademark of DOOWIN Rubber & Plastic for the flexible engineering products.

DooFlex's products passed rigorous ISO 9001 Quality Management System, approved by the third party SGS, CCS, BV, ABS, LR.



Our Core Value



Quality is morality, Quality is integrity, Quality is respect to clients

Honesty, Hard Word, Love for Others, Responsibility Philosophies — “People Oriented, Innovation”

DOOWIN adhere to the “People Oriented” concept. Pay attention to the application and implementation of the rules. Advocate the core value of “Honest, Hard Work, Love for others, Responsibility”. And this core values throughout all departments and all kinds of situation management operating standards and business standards. Resolutely oppose the bureaucracy, advocating labor glorious.

Strategies DooFlex always make innovation as the motivity of development, to pursue perfect as the principle of our action. Innovation is a key driver for our growth. Our strategies is based on it to provide the best possible solution for the customers.

Performance Perform better than our competitors. For each type product and each application area, our engineers made the most reasonable configured and function design based on the abundant practical experience. From the material choose, to the equipment of each webbing harness, air valves, pressure relief valves, we considered almost all conditions. Herewith, our products are the most convenient and effective usage with the lowest cost.

Responsibility Quality is the vigorous of development. Responsibility is base of quality. Each inferior product is considered as the expend of vigorour. Excellent quality will make the company keep thriving energy. Each product is the performance of our responsibility for customer and social.

Proof Load Testing Water Bags

DooFlex Flexible Engineering aims to be the best partner of load testing with advanced production technology and safety focus.

DooFlex water filled weight bags (PLB) meet the need for the simple, economy, convenience, safety and high efficiency load testing method instead of traditional solid test method.

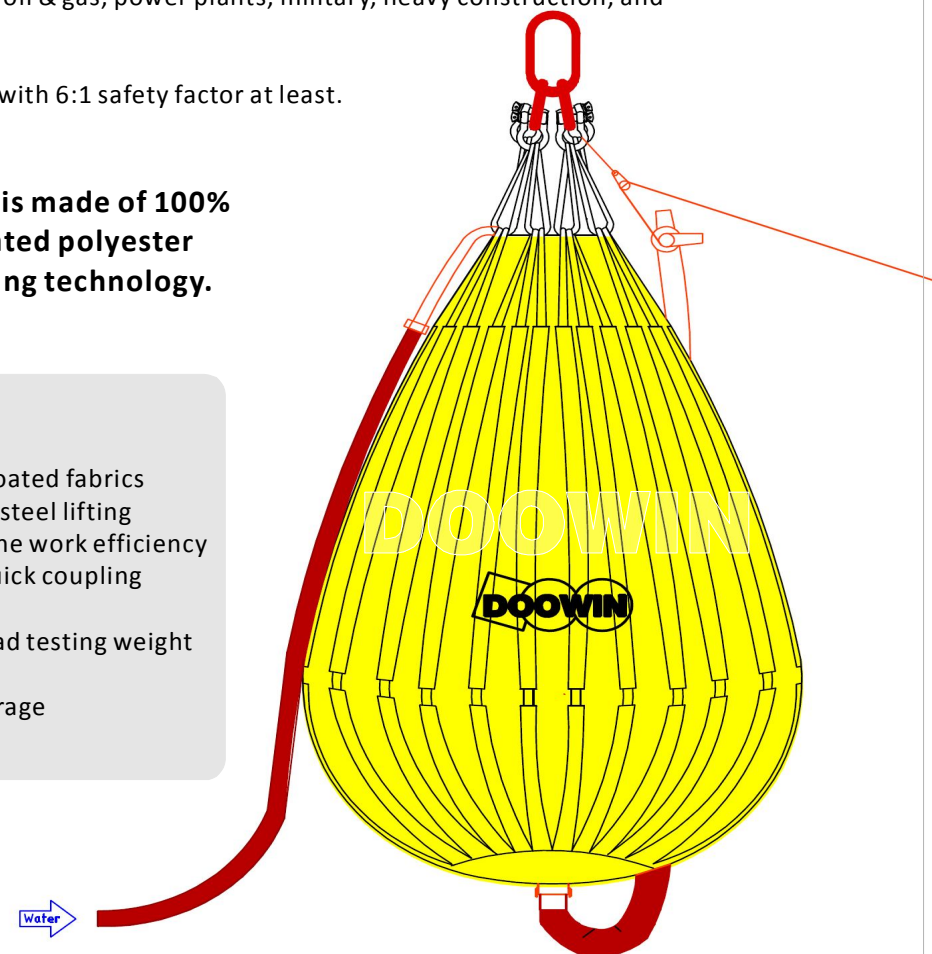
Load testing water bags used for the proof load testing of crane, davit, bridge, beam, derrick, and other lifting equipments and structures in the maritime, oil & gas, power plants, military, heavy construction, and manufacturing industries.

DooFlex water filled weight bag is designed with 6:1 safety factor at least.

Proof load testing water bag's body is made of 100% high-tenacity UV resistance PVC coated polyester fabric by high radio frequency welding technology. Type certificated by drop test.

Features and Advantages

- Made of heavy duty UV resistance PVC coated fabrics
- Heavy duty webbing harness with single steel lifting
- Easy to handle and operate to enhance the work efficiency
- Complete with all accessories, valves, quick coupling
- 6:1 safety factor verified for type test
- Multi size are available for variants of load testing weight
- Delivery ready for use
- Rolled compactly for easy carrying & storage
- Light weight to save transportation cost



Each set proof load testing water bag comes ready with following accessories certificated:

- Master link and shackles, with a minimum 6:1 safety factor for its working load
- Polyester webbing lifting straps, round slings, with a minimum 6:1 safety factor for its working load
- Filling and drain hose with valves and camlock
- Several handles welded around the water bag body
- The marine rope with pulleys

Note: 1. Load cell and shackles can be supplied upon request.
2. Different capacity have different assembly.

Specification

A wide range of sizes of load testing water bags is available. The main size of water weight bags is from 1 ton to 50 ton. Many water bags can be used together to load testing over 50 ton with the different combination.

Model	Capacity	Diameter	Height
PLB-1	1,000 kg	1.3m	2.2m
PLB-2	2,000 kg	1.6m	3.0m
PLB-3	3,000 kg	2.0m	3.6m
PLB-5	5,000 kg	2.2m	3.8m
PLB-10	10,000 kg	2.8m	4.8m
PLB-12.5	12,500 kg	3.0m	5.2m
PLB-15	15,000 kg	3.2m	5.4m
PLB-20	20,000 kg	3.5m	6.2m
PLB-25	25,000 kg	3.6m	6.4m
PLB-30	30,000 kg	4.0m	7.0m
PLB-35	35,000 kg	4.2m	7.3m
PLB-50	50000 kg	4.6m	7.8m

Drop Test



Low Headroom Water Weight Bags

Low headroom load testing water bags designed for the load testing for the lifting equipments and structures when testing operation have low headroom (LH). It also can be used as an fluid storage container for emergency use.

Low headroom load testing water bag has the same assembly with the normal size water bags. Its body is made from 100% high-tenacity UV resistance PVC coated polyester fabric by radio frequency welding technology.

Master link and shackles, polyester webbing lifting straps, round slings with a minimum 6:1 safety factor for its working load.

Model	Capacity (kg)	Diameter (m)	Length (m)
PLB-3L	3000	2.1	2.2
PLB-5L	5000	2.7	2.8
PLB-12L	12000	3	4.2



Parachute Type Air Lifting Bags

DooFlex is China unique professional manufacturer of underwater air lifting bags.

DooFlex parachute type lifting bags are designed with water drop shaped units used for supporting and lifting loads from any water depth. Its single point attachment is ideal for lightening underwater structures such as pipeline, their main application is for lifting sunken objects and other loads from the seabed to the surface.

Our parachute air lifting bags are manufactured by heavy duty polyester cloth coated with PVC. All quality and load-assured strops and shackles/masterlink are traceable.

All DooFlex parachute lifting bags are manufactured and tested comply with IMCA D 016, 2007.



Features and Advantages

- Made of heavy duty UV resistance PVC coated fabric
- Certificated heavy duty webbing harness, single point
- Overall assembly tested and proven at 5:1 safety factor
- High Radio Frequency welding seam
- Complete with all accessories, valves, inverter line
- Rolled compactly for easy carrying & storage
- High flow dump valves operated from bottom
- Third party certificate is available upon request
- Delivered in enclosed crate, ready for use



Specification

Type	Model	Lift Capacity		Dimension (m)		Dump Vales	Appr. Packed Size (m)			Appr. Weight
		Kgs	LBS	Dia	Height		Length	Width	Height	Kgs
Commercial Lifting Bags	OBP-25L	25	55	0.4	0.8	Yes	0.3	0.1	0.1	2
	OBP-50L	50	110	0.5	0.9	Yes	0.4	0.15	0.15	3
	OBP-100L	100	220	0.6	1.1	Yes	0.45	0.15	0.15	4
	OBP-250L	250	550	0.8	2.0	Yes	0.54	0.2	0.2	5
	OBP-500L	500	1,100	1.2	2.0	Yes	0.6	0.23	0.23	8
Professional Lifting Bags	OBP-1	1,000	2,200	1.3	2.4	Yes	0.8	0.4	0.3	15
	OBP-2	2,000	4,400	1.8	2.8	Yes	0.8	0.4	0.3	23
	OBP-3	3,000	6,600	2.0	3.2	Yes	1.2	0.4	0.3	35
	OBP-5LD	5,000	11,000	2.2	3.6	Yes	1.2	0.5	0.3	42
	OBP-5HD	5,000	11,000	2.2	3.6	Yes	1.2	0.5	0.3	42
	OBP-6	6,000	13,200	2.3	3.6	Yes	1.2	0.6	0.5	52
	OBP-8	8,000	17,600	2.6	4.0	Yes	1.2	0.7	0.5	60
	OBP-10	10,000	22,000	2.5	4.6	Yes	1.3	0.6	0.5	80
	OBP-15	15,000	33,000	3.0	4.3	Yes	1.3	0.7	0.5	120
	OBP-20	20,000	44,000	3.4	5.6	Yes	1.3	0.7	0.6	160
	OBP-25	25,000	55,125	3.9	6.0	Yes	1.4	0.8	0.7	180
	OBP-30	30,000	66,000	4.0	6.5	Yes	1.4	1	0.8	210
	OBP-35	35,000	77,000	4.2	7.0	Yes	1.4	1.2	1.3	230
	OBP-50	50,000	110,000	4.6	7.5	Yes	1.5	1.4	1.3	300

Totally Enclosed Air Lifting Bags

Totally enclosed air lifting bags is the best buoyancy load tool for the surface buoyancy support and pipeline laying work. All lifting bags are manufactured and tested in accordance with IMCA D016, Rev 3, 2007.

Totally enclosed air lifting bags are used or the supporting static loads in shall water on the surface, pontoons for bridges, floating platforms, dock gates and military equipment. Totally enclosed lifting bags offer an invaluable method of reducing the draught of vessel and lightening underwater structures. It also can provide an idea form of buoyancy or cable or pipeline float-out operations and river crossing.

DooFlex totally enclosed air lifting bags cylindrical shaped units, fabricated from heavy duty polyester cloth coated with PVC, completely equipped with the appropriate quantity of automatic air relief valves, certificated heavy duty load restrain harness of polyester webbing with shackles, and air inlet ball valves.

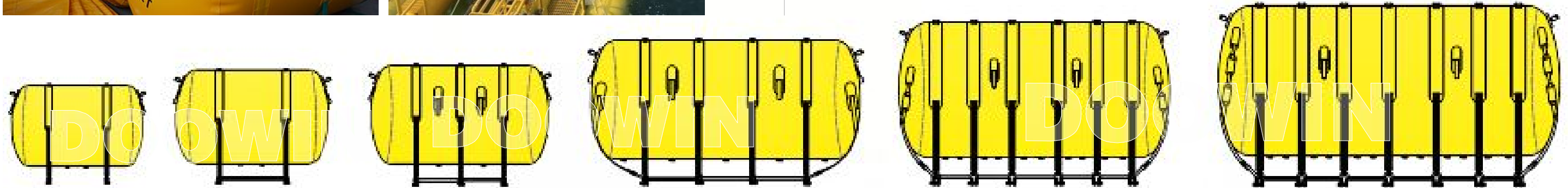
Features and Advantages

- Made of heavy duty UV resistance PVC coated fabric
 - Certificated heavy duty webbing harness
 - Overall assembly tested and proven at 5:1 FOS
 - High Radio Frequency welding seam
 - Equipped with auto pressure relief valves
- Complete with all accessories, valves, inverter line
 - Rolled compactly for easy carrying & storage
 - Third party certificate is available upon request
 - Delivered in enclosed crate, ready for use



Specification

Type	Model	Lift Capacity		Dimension (m)		Pick Up Points	Inlet Valves	Appr. Packed Size (m)			Weight (kgs)
		Kgs	LBS	Dia	Length			Length	Length	Width	
Commercial Lifting Bags	TP-50L	50	110	0.3	0.6	2	1	0.60	0.30	0.20	5
	TP-100L	100	220	0.4	0.9	2	1	0.65	0.30	0.25	6
	TP-250L	250	550	0.7	1.1	2	1	0.70	0.35	0.30	8
	TP-500L	500	1,100	0.9	1.4	2	1	0.80	0.35	0.30	10
Professional Lifting Bags	TP-1	1,000	2,200	1.0	1.8	2	2	1.20	0.40	0.35	18
	TP-2	2,000	4,400	1.2	2.3	3	2	1.10	0.40	0.40	28
	TP-3	3,000	6,600	1.4	2.5	3	2	1.20	0.50	0.45	39
	TP-5	5,000	11,000	1.5	3.4	5	2	1.30	0.50	0.50	52
	TP-6	6,000	13,200	1.6	3.6	5	2	1.35	0.50	0.50	66
	TP-8	8,000	17,600	1.8	3.8	6	2	1.30	0.60	0.60	78
	TP-10	10,000	22,000	2.1	3.6	6	2	1.30	0.80	0.60	89
	TP-15	15,000	33,000	2.2	4.6	7	2	1.30	0.80	0.70	120
	TP-20	20,000	44,000	2.4	5.6	7	2	1.30	0.80	0.75	138
	TP-25	25,000	55,125	2.5	5.7	7	2	1.60	0.90	0.80	189
	TP-30	30,000	66,000	2.7	6.1	6	2	1.60	0.90	0.80	280
	TP-35	35,000	77,000	2.9	6.2	6	2	1.60	1.00	0.90	310
	TP-50	50,000	110,000	2.9	8.0	9	2	1.60	1.00	1.00	340



Pipeline Buoyancy Bags

DooFlex have several types air lifting bags can be used as the pipeline buoyancy bags. It can provide the buoyancy continually, to support the submarine cable, or steel pipe during installation and transportation in shallow water.

DooFlex is making 'Individual Type Buoyancy Bags', 'Twin Type Buoyancy Bags', 'Cable Buoyancy Bags', 'Single Point Buoyancy Bags', 'Continuous Buoyancy Pipe'.

All DooFlex pipeline buoyancy bags are made of high strength PVC coating fabric material, which is highly abrasion, and UV resistant. And manufactured and tested according to the request of IMCA D 016.

Twin Inflatable Buoyancy Bags

The twin inflatable pipeline buoyancy bags can be used for the buoyancy support for the pipeline, cable installation as pontoon in water.

Twin individual inflatable pipeline pontoon are made by two individual pontoon after connecting. The pipeline or cable can be put on the middle support sheet easily. There are many cord fasteners on the body of pipeline floater in order to fix it with pipeline easily.

Model	Lift Capacity	Dimension (m)	
	KGS	Diameter	Length
TF100	100	0.46	0.4
TF300	300	0.46	1
TF500	500	0.51	1.5
TF800	800	0.6	1.8
TF1000	1,000	0.6	2



Cable Buoyancy Bags

The cable buoyancy bags are used for the cable and small diameter pipeline buoyancy lifting device. The cable buoyancy bags have dual individual chamber, which can encase the cable or pipe naturally.

Model	Lift Capacity	Dimension (m)	
	KGS	Width	Length
CF100	100	0.7	1.5
CF200	200	1.3	1.6
CF300	300	1.5	1.6
CF400	400	1.5	2.2
CF600	600	1.5	2.8



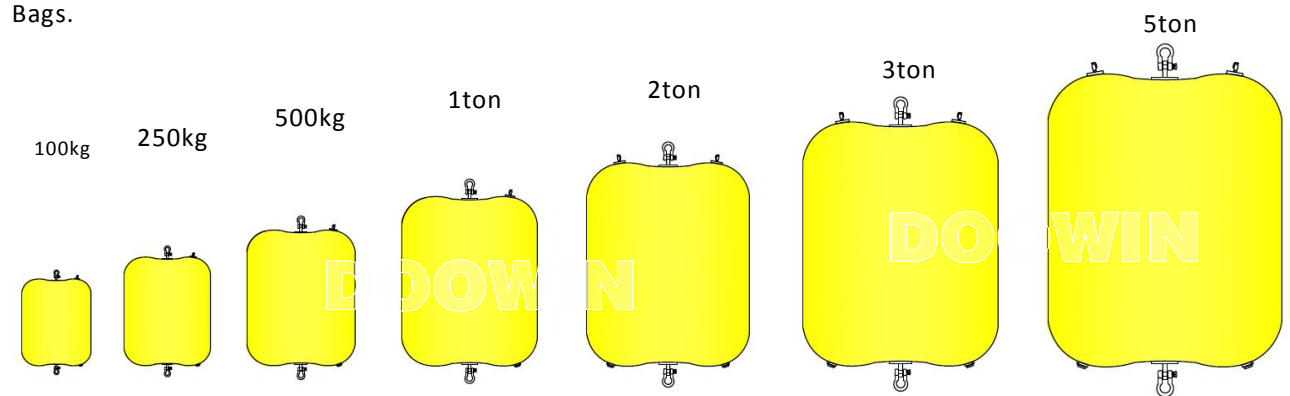
Single Point Buoyancy Bags

The single point buoyancy bags is one kind enclosed pipeline buoyancy bag. It only has one single lifting point. So it can work at large angle, like the parachute type lifting bags.

Single point buoyancy bags also are made of heavy duty PVC coating fabric material comply with IMCA D-016. Each buoyancy bag is fitted with pressure relief valves, and filling/discharge ball valves. One internal stop is used to connect the top lifting point with the bottom lifting point.



The main size is less than 5ton. For the bigger capacity, you can choose our Sealed Parachute Lifting Bags.



Pillow Type Air Lifting Bags

DooFlex enclosed pillow type lift bag is one kind versatile lift bags when shallow water or towing is a concern.

Pillow type lifting bags can be used in shallow water with the maximum lift capacity for the refloatation work and towing jobs, and in any position - upright or flat, outside or inside of structures. Perfect for vessel salvage, automobile recovery and emergency floatation systems for ships, aircrafts, submersibles and ROV.

DooFlex pillow type air lifting bags are made of high strength PVC coating fabric material, which is highly abrasion, and UV resistant.

Enclosed pillow type lift bags are fitted with heavy duty webbing harness with single pick points with the screw pin shackles on the bottom of the lifting bag, over-pressure valves, ball valves and quick comlocks. Customer sizes, and rigging options are available upon request.

All DooFlex pillow type air lifting bags are manufactured and tested comply with IMCA D 016.

Model	Lift Capacity		Dimension (m)		3/4" Inlet Assembly	Approx. Folded Dimention	Dry Weight kg
	KGS	LBS	Length	Width			
EP-100	100	220	1.02	0.76	Yes	0.40x0.30x0.20	5.5
EP-250	250	550	1.32	0.82	Yes	0.45x0.31x0.22	9.3
EP-500	500	1 100	1.3	1.2	Yes	0.45x0.35x0.25	14.5
EP-1000	1 000	2 200	1.55	1.42	yes	0.50x0.35x0.25	23
EP-2000	2 000	4 400	1.95	1.78	Yes	0.56x0.38x0.35	32.1
EP-3000	3 000	6 600	2.9	1.95	Yes	0.68x0.45x0.35	41.2
EP-4000	4 000	8 400	3.23	2.03	Yes	0.78x0.50x0.38	52.5

Note: Other size can be supplied upon request. The above specification is for your reference. Please refer the technical data sheet for the exact size.



Elongated Pontoon

Elongated pontoon is versatile in multiple application.

The elongated pontoon can be used to raise the sunken boat from deepwater, for the supporting docks and other floating structures, and also is excellent for the pipe laying and other underwater construction project.

DooFlex elongated pontoon are made of high strength PVC coating fabric material, which is highly abrasion, and UV resistant.

Elongated pontoon are fitted with heavy duty webbing harness with the screw pin shackles on the bottom of the lifting bag, over-pressure valves, ball valves and quick comlocks. Customer sizes, and rigging options are available upon request.

All DooFlex elongated pontoon are manufactured and tested comply with IMCA D 016.

Model	Lift Capacity		Dimension (m)		3/4" Inlet Assembly	Approx. Folded	Dry Weight kg
	kg	lbs	Diameter	Length			
LP-500	500	1 100	0.46	3.05	Yes	0.08x0.20x0.35	10
LP-1000	1 000	2 200	0.56	3.66	Yes	0.12x0.22x0.46	25
LP-1500	1 500	3 300	0.74	3.43	Yes	0.21x0.22x0.43	35
LP-2000	2 000	4 400	0.74	4.57	yes	0.21x0.25x0.57	50
LP-5000	5 000	11 000	1.1	5.81	Yes	1.11x0.30x0.73	70

Note: Other size can be supplied upon request. The above specification is for your reference. Please refer the technical data sheet for the exact size.



Lifeboat Test Water Bags

DooFlex Flexible Engineering aims to be the best partner of load testing with advanced production technology and safety focus.

DooFlex Lifeboat Test Water Bags are designed with the bolster cylindrical shape, made of heavy duty PVC coating fabric, and equipped with fill/discharges fitting, handles and automatic relief valves, which is activated once the water bags achieve the designed weight.

DooFlex also supply the test kits with the water bags for the easy filling and discharge operation work.

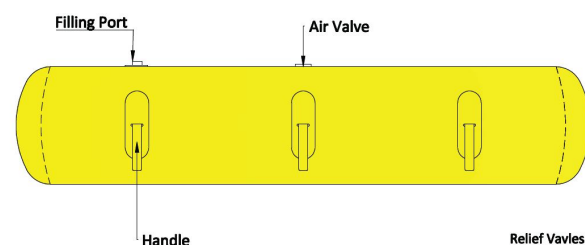
The Standard Accessories (6 x LBT)

- 1 x 6 port manifold
- 6 x 3/4" PVC ball valves with camlocks
- 1 x calibrated water meter with camlock
- 1 x brass ball valve & gate valve and plugs
- 6 x 3/4" filling/discharge hoses with camlocks
- 6 x 3/4" water bags' PVC ball valves with camlocks
- 1 x D50 fill/discharge fire hose with camlocks
- 1 x Diaphragm pump with camlocks
- 1 x D50 suction hose with camlocks at both ends

All these kits are packaged in transit box, ready for use.

Specification

The common model and size is 100kg, 250kg, 375kg, 400kg and 600kg. The single man bag is available too. We also can make any other size, different diameter and length combination to meet your special demand. The standard color is yellow. Other color also is available upon request.

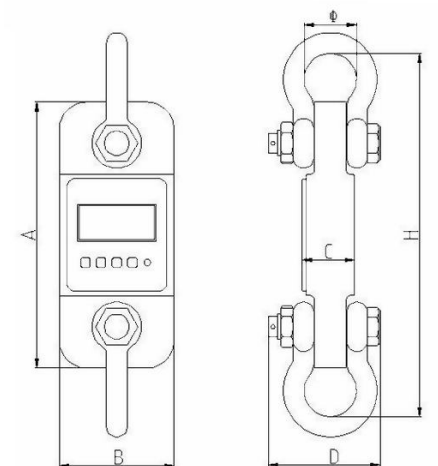


Model	Capacity	Size (mm)		Dry Weight (kg)
	(kg)	Diameter	Length	
LBT-100	100	460	800	6
LBT-250	250	460	1500	9
LBT-375	375	510	2200	10
LBT-400	400	510	2400	12
LBT-600	600	510	2600	15

Load Cell

Load cell is necessary instrument for the load testing with water filled weight bags. Measuring capacity is available as 2t, 5t, 10t, 20t, 30t, 50t, 100t, and 200t.

Capacity	Weight	A (mm)	B (mm)	C (mm)	D (mm)	Φ (mm)	H (mm)	Material
2t	1.7kg	245	112	37	190	43	335	Aluminum
5t	2.7kg	285	123	57	210	58	405	Aluminum
10t	10.4kg	320	120	57	230	92	535	Alloy Steel
50t	39kg	465	150	104	305	184	930	Alloy Steel
100t	81kg	570	190	132	366	229	1230	Alloy Steel
200t	210kg	725	265	183	440	280	1380	Alloy Steel



Wireless load cell used for the weight measuring of proof load testing using water weight bags. The load cell set consist of a load link with two shackles, wireless readout, and high quality carry case.

Our load cell is an extremely well-built instrument for industry use, as a standard wireless tool offer universal applications, whether used as conventional crane weight or to measure force, it is microprocessor controlled for precision accuracy, calibration is easier with wireless indicator.

Measuring Capacity	2t, 5t, 10t, 20t, 30t, 50t, 100t, 200t
Display:	18mm 6digits LCD
Power On Zero Range:	20% F.S.
Manual Zero Range:	4% F.S.
Tare Range:	20% F.S.
Stable Time:	<= 10 seconds
Overload Indication:	100% F.S. +9e
Max. Safety Load:	125% F.S.
Ultimate Load:	400% F.S.
Battery Life:	>= 40 hours
Battery Type:	"LR6(AA)" size alkaline batteries. 1.5V x 3
Operating Temp.:	- 10°C ~ + 40°C
Operating Humidity:	<= 85% RH under 20°C
Wireless Distance:	Min. 80m [200m(optional)]
Wireless Frequency:	2.4GHz(default), 433MHz, 860MHz(optional)

Inflatable Fenders

DooFlex inflatable PVC boat fenders are designed for the yacht or boat application to provide maximum protection. Inflatable PVC boat fenders can be quickly deployed and inflated with a standard foot pump, electric inflator or onboard airline making them ready to use in minutes. DooFlex inflatable PVC boat fenders are made of heavy-duty PVC or Hyplon coating fabric for high strength, puncture and abrasion resistance and resistance to petro-chemical.



Model	Size		Model	Size	
	Diameter	Length		Diameter	Length
IF-2561	250	610	IF-6191	610	910
IF-3061	300	610	IF-6112	610	1 220
IF-3091	300	910	IF-6115	610	1 520
IF-3012	300	1 220	IF-6118	610	1 830
IF-3015	300	1 520	IF-6124	610	2 440
IF-3018	300	1 830	IF-6130	610	3 050
IF-3024	300	2 440	IF-9191	910	910
IF-3030	300	3 050	IF-9112	910	1 220
IF-4661	460	610	IF-9115	910	1 520
IF-4691	460	910	IF-9118	910	1 830
IF-4612	460	1 220	IF-9124	910	2 440
IF-4615	460	1 520	IF-9130	910	3 050
IF-4618	460	1 830	IF-1215	1 220	1 520
IF-4624	460	2 440	IF-1218	1 220	1 830
IF-4630	460	3 050	IF-1224	1 220	2 440
IF-6161	610	610	IF-1230	1 220	3 050

Note: The above for your reference. The other size can be made upon request.

Pillow Water Tank

DooFlex pillow type water tank have the low profile, made of heavy duty PVC or TPU coating fabric, which give high abrasion and UV resistance. PVC water tank are used for temporary or long term water or liquid storage of oil, potable water, sewage, rainwater, chemical spillage waste, and other liquids. Pillow water tanks are lightweight, reliable, quick and simple use. We also make open top water tank, truck pillow tank, and other type water tank made of PVC or TPU coating fabric.



Model	Capacity (L)	Empty Dimension		Filled Height
		Length	Width	
PT-1	1 000	2m	1.8m	0.6m
PT-2	2 000	2.5m	2m	0.8m
PT-3	3 000	3m	2.3m	0.8m
PT-5	5 000	3.5m	3m	0.8m
PT-6	6 000	3.5m	3.2m	1m
PT-8	8 000	4.5m	3.2m	1m
PT-10	10 000	4.2m	3.8m	1m
PT-12	12 000	4.8m	3.8m	1m
PT-15	15 000	4.8m	4.6m	1m
PT-20	20 000	6m	4.6m	1m
PT-30	30 000	6.8m	5.4m	1.2m
PT-50	50 000	9m	6.2m	1.2m
PT-60	60 000	9.5m	7m	1.2m
PT-80	80 000	11m	7.8m	1.2m
PT-100	100 000	11m	9.5m	1.2m
PT-150	150 000	13.8m	10.8m	1.2m
PT-200	200 000	15.8m	12.3m	1.2m
PT-300	300 000	20m	14.6m	1.2m

Note: The above for your reference. The other size can be made upon request.

Gangway Test Water Bags

This type water bags are used for the load testing of gangway, accommodation ladder and other long structures. We also can make the size upon the client's special request.

Type	GW6000	GW3000
Capacity	1800kg	900kg
Lenght	6000mm	3000mm
Filled Width	620mm	620mm
Filling Valve	Yes	Yes
Discharge Valve	Yes	Yes
Fabric Material	1600g PVC coating Fabric	
Welding	HF Welding	



Platform Test Water Bags

This type water bags are used for the load testing of bridge, platform, walkways, floor & slab, or other structures in many industries. Each water bag has the inlet port, discharge port, and air release valve. We also can adjust the size upon the client's special request.

Capacity	3ton	10ton	20ton	30ton	50ton	100ton
Lenght Filled	4	7	9	13	12	12
Height Filled	0.38	0.48	0.56	0.58	0.7	1
Width Filled	2	3	4	4	6	10
Empty Weight	22	52	80	120	150	300

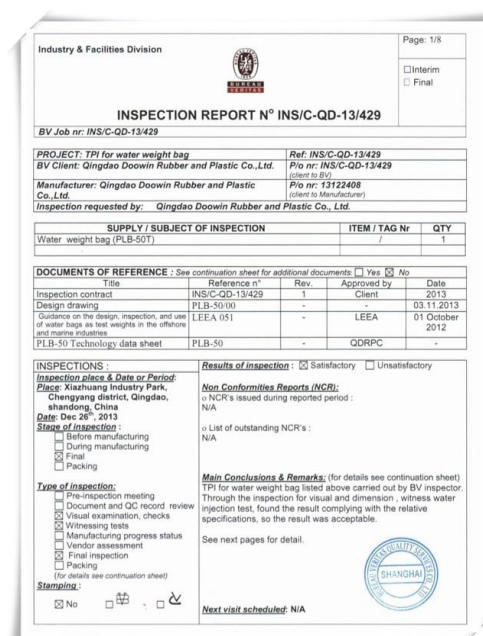


Quality Management

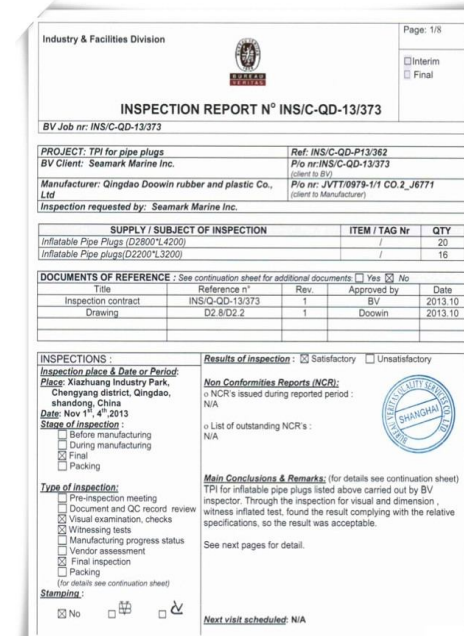
Your safety is our mission



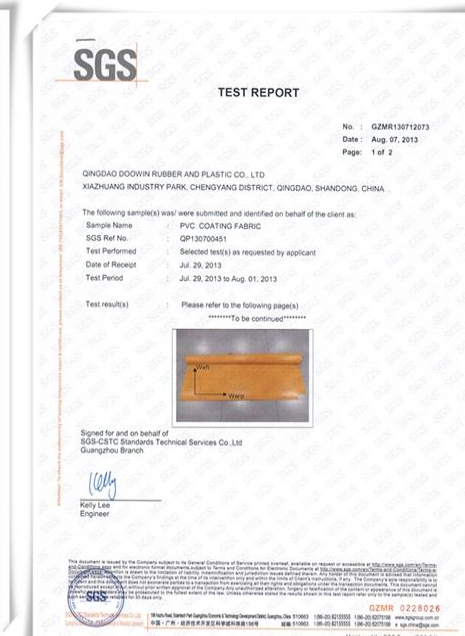
Quality Management System
ISO 9001 : 2008



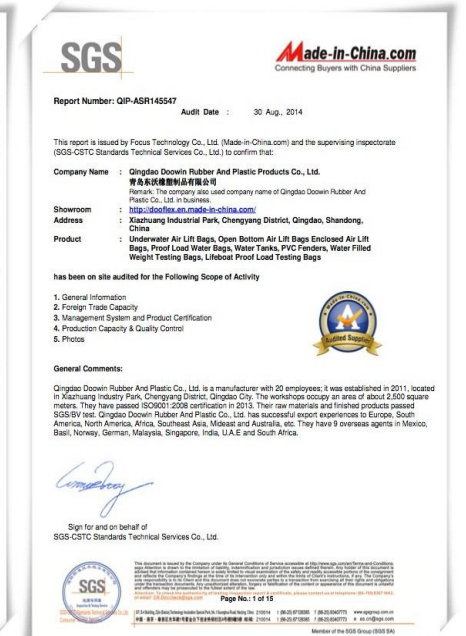
BV Certificate
For LBT and PLB Water Bags



BV Certificate
For Inflatable Air Bags



SGS Certificate
For the Material



SGS Audited Supplier

All DooFlex products are manufactured and tested comply with industry standard IEEA 051 and IMCA D-016.

The commitment to quality is our top priority. DooFlex aim at a high and constant level of quality. The quality assurance systems of DooFlex have been approved by international organization in accordance with Quality Management System ISO 9001 : 2008.

DooFlex products are designed, manufactured and tested fully compliant with the international industry stand. Meet the safety factor 5:1 or 6:1 required by IMCA or LEEA standard. For specific request, we also can provide the third party certificate, such as CCS, LR, ABS, DNV, or BV.

In order to ensure the quality of key elements, all accessories, such as heavy duty webbing straps, shackles and masterlinks, and air fill connection and valves, are also bought from the company certificated comply with ISO 9001, conforming to related industry standard.

For more details, please refer the introduction of each products.



IMCA D-016

It is the international industrial standard for the air lift bags and buoyancy bags. All DooFlex air bags are tested to meet this standard, to meet or exceed the requirement for the safety factor 5:1.

DooFlex air lift bags are assembled comply with this standard, including the safe valves, inverter lines, and other fittings.



Test Water Bags

Gangway Test Water Bags ----- 18
Platform Test Water Bags ----- 18
Proof Load Testing Water Bags ----- 19
LEEA 051 is seen as the international industry standard of water bag. It explicit the requirements for the elements of lifting set, which is separate from the bag, drop test way and pressure test way to verify the water bags.

DooFlex water bags meet and exceed the requirements of this standard.